



PERPETUATING THE ART OF BASKETRY

*Guilders Weave 2025*

By Louise Beyer

In January 2025, twenty members of the Deer Creek Basketry Guild joined sister guilds at Newport News, Virginia for four days of classes, fellowship, and fun! The 2025 theme was "It's Weaving Time Somewhere".

Host guild, Tidewater Basketry Guild, once again put on a superb conference. Bringing together a variety of professional teachers to offer some awesome classes. This is the place to expand your knowledge of different basketry styles, materials and techniques.

Held at the Marriott at Center City, the staff happily accommodated all our needs.

Be sure to check out their website, [tidewaterbasketryguild.org](http://tidewaterbasketryguild.org) for more information. Classes for 2026 will be advertised in July or August 2025. Start planning now! Classes for all levels of weavers are offered.



WINTER 2025

## Newsletter Highlights

\_\_\_\_\_ Guilders Weave 2025

\_\_\_\_\_ Letter from the President's Basket

\_\_\_\_\_ Featured Teacher

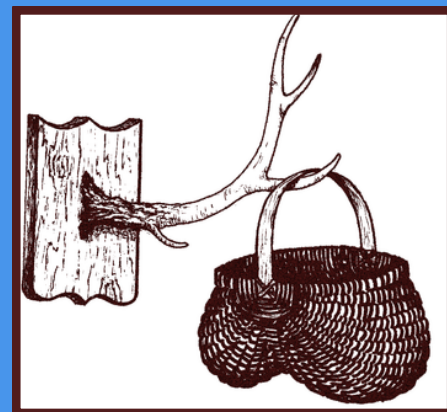
\_\_\_\_\_ Shenandoah Creates

\_\_\_\_\_ Free Pattern

\_\_\_\_\_ Community Service Project 2025

\_\_\_\_\_ Upcoming Classes

\_\_\_\_\_ Spring Bingo - April 12th



"The Lash Word" is a quarterly publication of the Deer Creek Basketry Guild



Dear Fellow Members!

I'm so happy to add my letter to this edition of "The Lash Word". The newsletter has been dormant since COVID, but we have so much good news, it's wonderful to share it with all of you!

Although it was with some trepidation that I threw my name in to run for Guild President last year, I must say I'm enjoying it. The support by all of you and the Board of Directors has been amazing!

Our monthly meetings have seen a steady attendance of 30+! Your generous support of the upcoming bingo on April 12th, ensures its success! Your attendance at outside classes enables us to bring in more and more teachers. We have a busy spring and summer planned!

I'd like to welcome new members who have joined since January 1, 2025: Brenda Conjour, Diane Durey, Michael Keating, Evelyn Miller, and Clare Walker! We are so happy to have you and hope you are able to participate in lots of our activities and events.

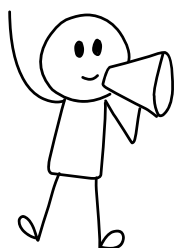
Articles, pictures, tips, etc., are always welcomed for input to the next "The Lash Word" to be published the end of June. Please provide suggestions for our Featured Teacher column as well as new ideas. All input can be emailed or given to our Vice President, Mary Anne Tremblay at wyored08@yahoo.com who is acting as content coordinator.

Thanks for your support and your love of the art of basketry! See you at the April 6<sup>th</sup> meeting and at the April 12<sup>th</sup> bingo!

*Mary Louise Orth*

## Public Classes

Now that Steppingstone Farm Museum has reopened since its fire last summer, the Guild is once again holding monthly beginner level classes open to the public. Emails are sent out to our public email address list approximately four weeks before the class as well as to our members. Watch your email and the website for announcements! Plan to visit the museum this Spring! Great day trip!



Have an idea for a meeting activity? Contact our President, Mary Louise!

## UPCOMING OUTSIDE CLASSES!

Check guild website: [deercreekbasketryguild.org](http://deercreekbasketryguild.org) for more information!

- April 3-5, '25 - Pam Milat - teaching at the Guild! Registration closed.
- May 9, '25 - KNK Creations teaching a one-day class at the Guild. Registrations open!
- May 29-31, '25 - Denise Bendelewski coming to teach Nantucket Classes! See website for details. Registration closes: March 31, 2025
- July 26 '25 - Susan Schaefer teaching a beginner Rib Class. Details published soon!

Email [dcbg@zoominternet.net](mailto:dcbg@zoominternet.net) and let June know which classes you'd like to take and she will email you a registration form!

I began weaving about 40 years ago at a community education program in Arkansas. My first basket was a 6" egg basket and then the next class I wove a hen basket. After those two classes there was no going back. I soon found a small basket shop about 30 miles from where I lived and began taking other classes and buying my own materials.

I attended my first basket convention in St. Louis, MO and couldn't believe the variety of classes and teachers. I made my first Nantucket basket with Jim Rutherford, wove on a gourd and tried my hand at pine needles. I've been attending basket conventions and seminars ever since.

About 6 years after I started weaving, I entered my first craft show. Then with my basket partner, Candace Katz, we did one fall show each year. Most of my basket time is taken up with creating new designs and teaching at various venues. I have taught in about 15 different states, at conventions, guilds and small groups. I have also taught on the Basket Weaving Cruise starting in 2010. I teach small private lessons in my very small

studio and about once a month I will teach a beginner class at a local Adult Wellness center. I also do small private groups, such as a church group, family groups or County Extension clubs. I really enjoy teaching new weavers. It's fun to see the joy in their face when they realize they can make a complete basket! Even with experienced weavers, I hope I can give them some new idea, tidbit or helpful hint in each class that I teach.

I retired after 33 years from teaching elementary school. I have two daughters, two stepdaughters, ten grandchildren and now added twin great granddaughters. We live in the country and enjoy the quiet along with deer, raccoons, foxes and many other critters. I have cut back a lot on my long distance traveling due to my husband's health and the passing of my basket partner, Candace.

I mainly sell my patterns and kits online through Etsy.

You can find me at: [basestoweave.Etsy.com](https://basestoweave.Etsy.com)



## Spring Bingo!

The Guild Spring Bingo is coming up fast. Saturday April 12, 2025 at The Highlands School, 2409 Creswell Rd, Bel Air, MD. Doors open at 11:30 am and Bingo starts at 1:00 pm. Those setting up will arrive at 9:00 am on the 12th or as notified.

If you have any questions about what jobs you have volunteered for or baskets that you are donating or filling, contact Louise Beyer at [louisebeyer@comcast.net](mailto:louisebeyer@comcast.net).

Take advantage of the Marketplace, where you can sell your handwoven baskets! Information about this on our website. If you have any questions, contact June Hersey at [jhersey@zoominternet.net](mailto:jhersey@zoominternet.net). Bring 1 or bring 100!!

Hope you are working on our cute little door prize basket, "Inspire", pattern donated for this use only by Debbie Hurd of Bases to Weave. If you can weave some, contact Jacqueline Steffy at [jasteffy@hotmail.com](mailto:jasteffy@hotmail.com) to get some kits.

Thanks to everyone for donating their time and talent to make this bingo a resounding success for our patrons.

## Guild Officers and Chairpersons - 2024 - 2026

\*President: Mary Louise Orth, Ph: 443-900-1202; Email: [dcbg@deercreekbasketryguild.org](mailto:dcbg@deercreekbasketryguild.org) or [orth1949@gmail.com](mailto:orth1949@gmail.com)

\*Vice President: Mary Anne Tremblay, Ph: 443-243-4612; Email: [wyored08@yahoo.com](mailto:wyored08@yahoo.com)

\*Secretary: Lisa Owens, Ph: 443-310-8329; Email: [lisakowens@yahoo.com](mailto:lisakowens@yahoo.com)

\*Treasurer: Kathy Garrett, Ph: 443-655-2949; Email: [ktbgarrett@verizon.net](mailto:ktbgarrett@verizon.net)

\*Program Chairperson: Louise Beyer, Ph: 410-937-3983; Email: [louisebeyer@comcast.net](mailto:louisebeyer@comcast.net) (Steppingstone & Guilders Weave POC )

\*Education Coordinator: Kathi Workman, Ph: 410-790-4279; Email: [songbirde2@gmail.com](mailto:songbirde2@gmail.com)

\*Membership Chairperson: June Hersey, Ph: 717-309-9958; Email: [jhersey@zoominternet.net](mailto:jhersey@zoominternet.net) (Marketing, Website Manager)

Librarians: Heidi Oestreichter, Ph: 240-404-8962; Email: [heidioestreicher@yahoo.com](mailto:heidioestreicher@yahoo.com)

Pat Anderson, Ph: 443-528-7331; Email: [flash481@comcast.net](mailto:flash481@comcast.net)

Historian: Vacant

\* Board Member



# Community Service Project

by Louise Beyer, Program Chair

Each year our Guild participates in a Community Service Project to benefit our local community. The Guild selected to support the Judy Center of Harford County again this year. Below are some details about the center. The Judy Center requested 80 tote baskets which the Judy Center will fill with items focusing on preparing children for school. Thanks to all the members who wove beautiful tote baskets this year!



About the Judy Center: The Judith P. Hoyer Center Early Learning Hubs, also known as “Judy Centers,” benefit everyone in Maryland by improving the quality of life for families. Through a dedicated staff of early learning professionals, they help prepare children age birth through kindergarten for school readiness. Located at Title I schools in every Maryland county, Judy Centers play an important role in the communities they serve.

Judy Center Early Learning Hubs prepare children for success in school and life. By connecting families with high-quality, comprehensive, full-day, full-year early education services, the Judy Centers promote school readiness for children ages birth through five. Utilizing a multigenerational approach for families and children, and providing professional development for early childhood educators, Judy Centers help to support all of the adults in a child’s early years.

Judy Centers provide the physical health, mental health, academic, and other types of support needed to thrive for many Maryland children and families. As of FY2022, Maryland is home to 69 Judy Center sites throughout the state, serving children and families in every local school system.

As the early education coordinator for Prince George’s County Public Schools, Judith P. Hoyer lamented the gaps in available services for low-income families. In the 1990s, she created a central location in Adelphi, Maryland, for vital early childhood services, thus fostering cooperation of governmental and private agencies around the needs of local families. After her untimely death in 1997, her husband, Congressman Steny Hoyer (D-MD), partnered with then-Governor Parris N. Glendening and led a successful movement to bring her collaboration model to other areas of Maryland. As a result, the Maryland State Legislature enacted the Judith P. Hoyer Early Child Care and Education Enhancement Program in May 2000.

## Weave It and Reed It

A message from your librarians, Heidi and Pat

If you are interested in some easy basket projects we recommend a book by BJ Crawford. We just happen to have “Basketry: 18 Easy and Beautiful Baskets to Make” in our guild library for you to borrow.

Crawford has a chart for you to design your own market basket in 6 different sizes! Easy instructions for embellishing your baskets include Japanese wave weave, curls and diamonds. Instructions for round bases will help you to design Easter baskets for the spring. There is a lovely hanging mail basket that is perfect for your leftover dyed basket scraps. Save your leftover short pieces to make a French randing basket.

A version of the garlic basket that I made with members at the March meeting can be found in this book. I personally have used this book as a reference to make several different baskets, all of which were fun and easy to do.

Pat Anderson

YouTube.com is a great resource for basketry techniques! Check it out next time you are struggling! For twining a round base, type this link in your browser:  
<https://youtu.be/fftlBAXU8?si=lpSOOQmtYNozMsDI>

## Next Newsletter

Contribute ideas, articles, resources, pictures, etc. to the next edition of “The Lash Word”! Write it up and email to Mary Anne Trembly at [wyored08@yahoo.com](mailto:wyored08@yahoo.com).

Next publication date: Fourth Week of June 2025! Submissions due June 15, 2025.

# Shenandoah Creates

*Taken Directly from Their Website*

Shenandoah "CREATES" is a grassroots ARTS organization developed by local art enthusiasts. Our mission is to enable top-tier artists and craftspeople to share their creativity in workshops conducted in our beautiful valley.

The concept of "Shenandoah Creates" began with conversations about the potential of ART to enhance economic development and quality of life within our community. We believe that, by bringing nationally recognized artists as well as art enthusiasts to our region - we are positively affecting local amenities, employment, tourism, and small business investment.

Our workshops are located at venues in Virginia's Shenandoah Valley, home to famous attractions like Luray Caverns, Shenandoah National Park, and the Shenandoah River. Many local "farm" wedding and event sites constructed by talented entrepreneurs provide the perfect inspiration for creativity while showcasing the beauty of this area. We have carefully selected them as partners. Our instructors are masters in their craft and your time spent with them will be productive, inspiring and fun.

Shenandoah CREATES looks forward to sharing a special creative experience with you!  
- Julia + Liz - The Shenandoah CREATES Team  
website: <https://www.shenandoahcreates.com>

## Open Weaves

Open weaves are a great opportunity to weave with friends, finish those UFOs (unfinished objects), get some help with a technique you may have been struggling with.

Here's a partial schedule where our members often gather:

Mondays at McFaul Activity Center, 525 W MacPhail Rd, Bel Air, MD; 10 am to 2 pm. Stop in any time with your project and your tools and "Weave with Friends".

Wednesdays at Havre de Grace Senior Activity Center, 351 Lewis Lane, Havre de Grace, Md 12 to 3 pm.



When using braided seagrass as a weaver, try starting the seagrass in a corner, weave as desired , then cut the seagrass. It can be cut so it butts up against where it started . Paint ends of seagrass with clear nail polish to prevent fraying,

## DCBG Website

Be sure to check our website, [deercreekbasketryguild.org](http://deercreekbasketryguild.org) for latest information!

Suggestions to improve the website or to contribute resources, articles, pictures of Guild event..., email: [dcbg@zoominternet.net](mailto:dcbg@zoominternet.net)

## New Additions

The Guild had the opportunity to purchase some used Catsos molds. In addition to the other items in the Library Cabinet, members may borrow Nantucket and Black Ash molds! Check out the cabinet and patterns for ideas!

## Calendar

Meetings are usually held the first Sunday of the month at 1 pm, unless it conflicts with a federal holiday, then the second Sunday at the Harford Community College (HCC), Joppa Hall, Room J 015. Check our website for a map to the hall.

April 6, 2025 - Monthly Meeting, HCC

April 12, 2025 - Spring Bingo, The Highlands School

May 4, 2025 - Monthly Meeting, HCC

June 8, 2025 - Monthly Meeting, HCC

July 13, 2025 - Monthly Meeting, Spenceola Clubhouse (Picnic and Yard Sale)

August 3, 2025 - Monthly Meeting, HCC

September 7, 2025 - Monthly Meeting, HCC

October 5, 2025 - Monthly Meeting, HCC

October 25, 2025 - Fall Bingo

November 2, 2025 - Monthly Meeting, Steppingstone Farm Museum (Dye Party)

December 7, 2025 - Monthly Meeting, Spenceola Clubhouse, (Christmas Party)

--Dates and location subject to change! Check website and/or contact our President for updates-- Page 5



# Free Pattern - Easter Basket

Provided Free By Autumn Moon Basketry;  
<https://www.augustmoonbasketry.com>

## Supplies Needed:

- 1/2" Flat Reed
- 1/2" Flat Space-Dyed Reed, Country Garden
- #2 Round Reed
- #3 Round Reed
- 1/2" Flat Oval Reed
- #3 Seagrass
- 3/16" Flat Oval Reed
- 10" Round Notched Handle

1. Out of 1/2" flat natural, cut 6 stakes 25" long and mark the midpoints. Nail the stakes to a board through the midpoints (smooth sides up). Fan the stakes out equally. Fold a piece of #2 round reed almost in half, loop it around 1 stake about 1-1/2" from the center nail and twine 1 row around the center. Make sure it's perfectly round and centered and then continue twining until the bottom measures 6" in diameter.

2. Out of 1/2" Flat Space-dyed reed, cut 6 stakes 25" long repeat step 1 with these stakes.

3. Place one bottom on top of the other, offsetting the stakes. Make sure the smooth sides of both bottoms are facing up. Join together by continuing to twine around each individual stake by using the #2 round reed from one of the bottoms. (Cut the #2 round from the other bottom off.) Twine until the bottom is 7-1/2" in diameter. End the #2 round reed weavers on the rough sides of the stakes by cutting off.

4. Upset the stakes. Begin weaving with 3 pieces of #3 round reed. You'll be doing 3-rod wale (twining with 3 pieces) for 8 rows. Shape the basket so that the stakes start standing just a little straighter each row. By the end of the 8th row, the sides of the basket should be straight up. Your basket should be about 9-1/2" in diameter.

5. Clothespin the notched handle to the stakes it is going to be inserted behind so that you can weave around it as you go. Weave 7 rows with 1/2" space-dyed reed, overlapping for 4 stakes and cutting the weaver off each row.

6. Do 4 more rows of 3-rod wale with #3 round reed. If your handle notch is starting to get really thick, stop weaving around the handle and weave just around the stake from now on.

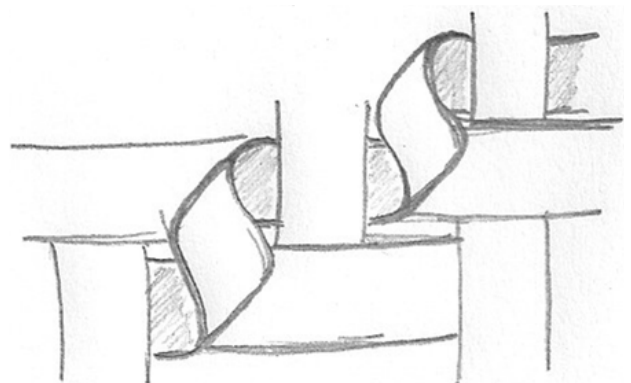
7. We're finished weaving up the side of the basket, so we're going to start the border by twining 3 rows with #2 round reed. Cut the two stakes that are on the outside of the handle off so that the ends are under the 3 rows of #2 twining. The rest of the stakes are going to tuck into the basket by going over 3 rows of twining and under the

4 rows of 3-rod wale. Cut the ends off so that they end under the 4 rows of 3-rod wale.

8. Place a piece of 1/2" flat oval on the inside of the basket, flat side against the basket, covering up the top 3 rows of twining and then put a piece of 1/2" flat oval on the outside of the top 3 rows of twining, flat side against the basket. Overlap the ends a bit and be sure to thin the overlapped ends down so that your border is not double thick there. Place the ends of the 1/2" flat oval that show in a place where the "x" of your border will hide them. Put a piece of #3 seagrass on top of the basket, between the 2 pieces of 1/2" flat oval and do an "x-ed" border using your 3/16" flat oval.

9. It's time to do the curls with a piece of 1/2" Space-Dyed reed. With the rough side up, start the end under the stake beside the handle on the 1st row woven with 1/2" space-dyed reed. Form the curl by going to the next stake that's 1 row up. See the diagram below. Do this until you have 5 curls. Then you want to do 5 more curls going down the side of the basket and ending behind the stake beside the handle. Do a second row of curls under the one you just did with 3 curls going up and then 3 curls coming down. Repeat on the other side of the basket. pattern courtesy of:

August Moon Basketry, 4702 Airport Road, Pageland, SC 29728 phone: 843-672-3534 visit website at: [www.augustmoonbasketry.com](http://www.augustmoonbasketry.com)



Name: \_\_\_\_\_ Date: \_\_\_\_\_

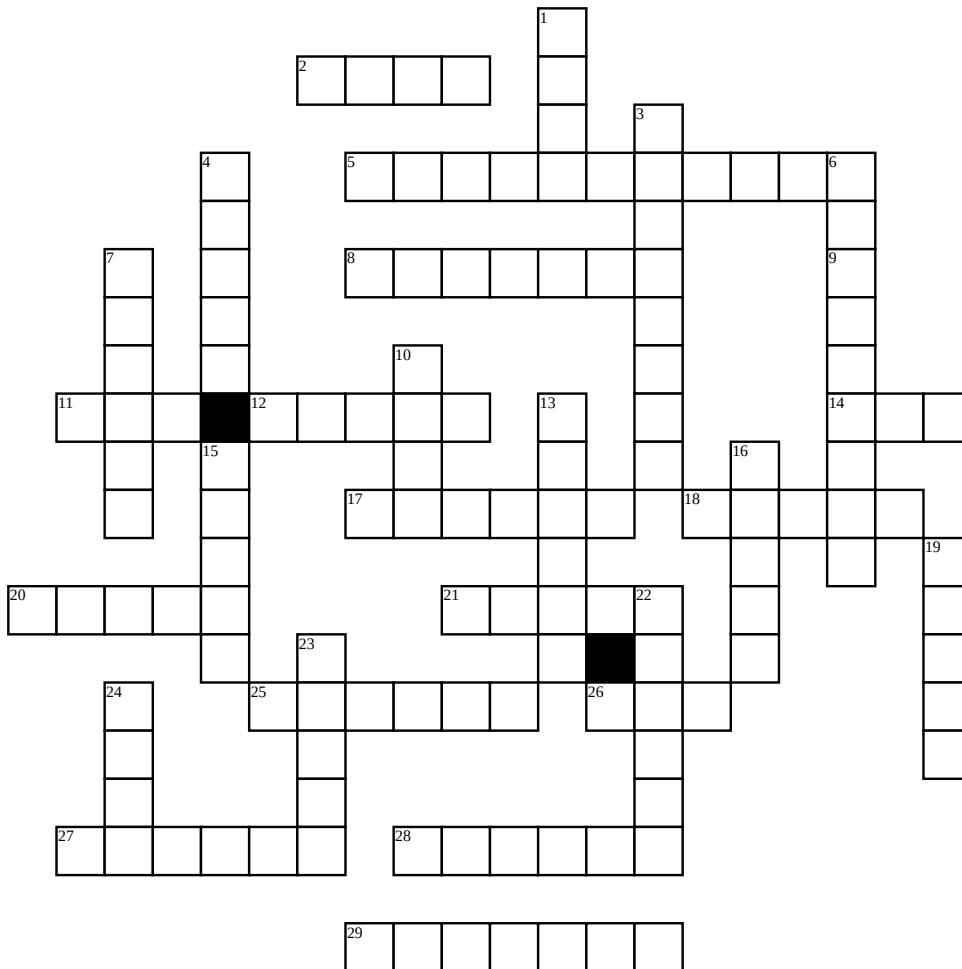
# Basketry Teachers

Hammond	Beachesne	Adelman	Kraayeveld	Catsos	Wagner
Wobbleton	Elzy	Bendelewski	Maugans	Annunziato	Sheriff
Barnes	Thomas	Anderson	Beyer	Hersey	Workman
Stritch	McConaughy	Moltrup	Hurd	English	Bowers
Schaefer	Milat	Wilson			

N	M	V	X	K	Y	E	S	R	E	H	Y	O	A	F	E	L	L	M	V	B	Q	B	W
Z	A	F	D	N	M	O	D	K	L	I	W	R	F	G	I	S	A	M	O	H	T	O	R
D	B	M	T	H	R	W	U	L	U	H	B	I	S	C	D	R	M	X	T	Q	L	X	E
V	R	Q	L	H	U	W	L	H	X	B	Y	A	L	T	S	E	N	R	A	B	H	A	Q
H	Y	M	S	E	O	R	B	N	G	T	F	F	N	S	R	Y	Q	J	W	M	V	I	E
X	A	A	D	O	D	E	D	B	X	C	B	G	E	N	O	I	V	B	H	O	S	C	L
L	X	M	T	Y	M	A	X	O	M	Z	J	D	M	V	U	N	T	U	E	L	P	D	Z
D	E	J	M	I	B	S	T	W	C	A	V	Y	R	N	U	N	Q	C	C	T	D	J	Y
Z	B	T	L	O	E	M	A	E	C	F	A	N	U	H	H	W	Z	H	H	R	W	Q	H
H	E	A	L	R	N	K	R	R	O	R	X	M	P	J	T	N	S	I	U	U	J	E	T
H	T	G	V	T	D	D	U	S	N	E	N	I	B	Y	O	I	K	F	A	P	H	V	Y
Z	V	C	U	S	E	Z	L	O	A	N	Q	J	B	T	L	D	A	A	T	T	R	M	W
R	F	M	Q	H	L	W	A	L	U	G	X	H	E	G	L	N	A	E	T	H	O	R	Y
E	X	R	L	T	E	K	H	U	G	A	Z	L	N	E	D	R	S	L	Q	Z	C	A	O
Y	V	V	B	D	W	N	J	F	H	W	B	E	V	E	O	J	X	H	F	C	E	V	H
E	F	O	S	R	S	K	S	J	Y	B	K	E	R	K	G	T	O	W	E	N	L	N	X
B	S	P	F	P	K	Y	U	N	O	X	Y	S	V	T	Q	M	H	B	S	R	X	S	Y
F	T	C	P	I	I	P	J	W	B	A	O	V	P	P	Z	K	K	E	V	W	I	K	S
H	W	S	H	R	M	A	U	G	A	N	S	T	G	K	X	T	H	D	S	Y	D	F	H
B	X	Z	O	A	A	L	J	R	W	S	Q	I	G	G	B	C	D	N	H	O	N	U	F
O	N	E	B	S	E	Z	K	T	Z	Y	A	B	H	G	A	I	L	A	R	D	M	B	O
X	K	J	T	T	T	F	S	P	V	S	J	F	K	E	C	J	B	G	H	A	B	J	N
U	E	A	L	N	U	A	E	J	W	V	I	Z	B	K	U	P	P	I	Y	Y	U	E	Z
G	W	K	O	W	T	U	C	R	H	Y	T	X	P	F	Q	T	W	O	R	K	M	A	N

**BRING YOUR COMPLETED WORD SEARCH PUZZLE TO THE APRIL 6TH MEETING  
AND RECEIVE A RAFFLE TICKET TO WIN A PRIZE!**

# DCBG



## **Across**

2. Weaver used in a Nantucket Basket.  
 5. Tool known as the weavers third hand.  
 8. Technique used to sew your rim together  
 9. Letter identifying a type of wooden handle  
 11. Body part that also forms a basket.  
 12. Liquid used in most weaving  
 14. Who wears a lot of gold bling at the bingo  
 17. Founding member who designed the Guild logo  
 18. Commonly used measuring stick.

20. Item used to hold weaving liquid  
 21. Held to teach basketry  
 25. Reed is cut from what plant?  
 26. Basket foot consists of this body part.  
 27. Falls from a pine tree and is woven in a basket  
 28. Outside teacher from W. VA, who holds rib basket classes for us.  
 29. Weaving instructions.

## **Down**

1. What technique uses pieces of round reed to create a special design  
 3. Common rim filler.

4. Used to coat a basket with after weaving.  
 6. What guild hosts Guilders Weave  
 7. What are members doing when they look like they are creating a witches brew  
 10. Animal's antler sometimes used as a handle.  
 13. Guild monthly meeting is held on what day.  
 15. Technique used to weave a round base  
 16. Association of craftsmen.  
 19. Tool used to scarf rims.  
 22. Used to cut reed.  
 23. Tool used to determine the reed size.  
 24. Basket bottom.

**BRING YOUR COMPLETED CROSSWORD PUZZLE TO THE APRIL 6TH MEETING  
 AND RECEIVE A RAFFLE TICKET TO WIN A PRIZE!**