

PERPETUATING THE ART OF BASKETRY

Basketry is an Ancient Art!

Spanish researchers have identified Europe's oldest known first direct evidence of basketry in hunter-gatherer societies of southern Europe. The researchers estimated the baskets are roughly 9,500 years old—2,000 years older than previously thought.

Seventy-six objects found during 19th-century mining activities in the Cueva de los Murciélagos, which translates literally to cave of the bats, near the city of Granada, Spain were studied. The prehistoric items were made from organic materials including wood, reed and esparto, or *Stipa tenacissima*, a grass crushed to make twine.

Archaeologists previously thought woven baskets were made by farmers from the Neolithic period, when humans began living a more settled lifestyle, because they were intricately decorated with geometric motifs, made with dyed fibers and even adorned with human hairs or pigments. But the carbon-14 dating determined they were made during the Mesolithic era, or Middle Stone Age, when hunter-gatherer lifestyles were still prevalent.

The quality and technological complexity of the basketry made the researchers question the simplistic assumptions made about human communities prior to the arrival of agriculture in southern Europe.

Most of archaeologists' knowledge of past societies comes from the discovery of items more durable than grass and wood. In southern Europe, well-preserved artifacts made from organic materials are rare and limited to a few sites where objects have either been charred, waterlogged or desiccated (undergone extreme drying). But plant-based artifacts give archaeologists insight into cultural and technological traditions, trade networks and human-environmental relationships.

To read the entire article, follow this link: [Archaeologists Uncover 9,500-Year-Old Woven Baskets and Europe's Oldest Sandals.](#)

Thanks to member, Marilyn Abato, who found this information online. Now when we tell people, basketry is an ancient art, here's the proof!

SPRING 2025

Newsletter Highlights

[Basketry is an Ancient Art](#)

[Guilders Weave Update](#)

[Featured Teacher](#)

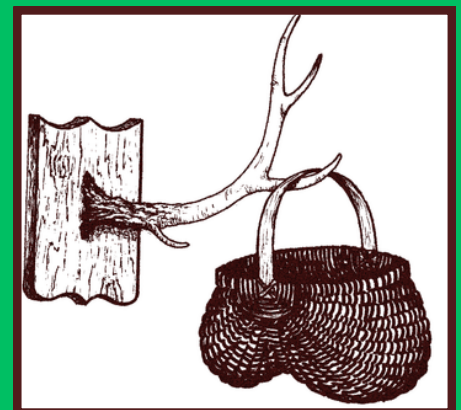
[State & County Fairs](#)

[Free Pattern](#)

[Tip from Cheryl Thomas](#)

[Upcoming Classes](#)

[Out and About](#)



"The Lash Word" is a quarterly publication of the Deer Creek Basketry Guild



Hello Members!

I have to start with a big thank you to YOU the guild members for the success of our spring bingo. Even with the last minute changes, we did it. Of course as one bingo ends prep for the next begins. But more on that later.

We're moving into the heart of summer which can really melt a person. Don't despair, there are still fun things to do. Our July get together is just around the corner catered by Mission BBQ. Yummy yum! While we're enjoying the food, we will have the opportunity to swap, sell or give away basketry materials amongst ourselves. Take the opportunity to purge your unwanted items.

Through the summer into the fall, the Guild will continue to support Steppingstone Farm Museum at their monthly special days. June and Louise will be continuing to offer basketry classes at Steppingstone to the public in order to attract more people to the craft.

The Harford County Farm Fair comes in July and the Maryland State Fair in August/September. These Fairs offer an opportunity for our members to show off their beautiful baskets and woven projects. Information about submitting items to the Fairs is in this newsletter. Let's show how good DCBG is!

Stay cool,

Mary Louise Orth

Tip from Basket Teacher, Cheryl Thomas of Linden, North Carolina

"I have been weaving since 1993 and started teaching basketry classes at Fayetteville Technical Community College in 2021. I have taught at the North Carolina Basketmakers' Association Convention, Guilders Weave, South Carolina's convention, and at various guilds (North Carolina, Tennessee and West Virginia). Reed baskets are the ones I enjoy the most. I would love to share one of my tips for the weaver who weaves too tightly. If you have a tendency to weave too tight, try this:

Be very exaggerated as you weave around each spoke – try not to weave "straight" across the spokes. Get a little wrist action going! My favorite way is to put the tip of my finger behind the weaver as it is going over the spoke and, as you are coming from behind the spoke to the right of it, give a little push back to the left with your right hand. This will release some of the tension on the spoke you just wove over. Don't push back so much that you create a bubble over the spoke.

This method works well when you need to flare out your basket. Push back consistently on each row until you achieve the desired flare."



UPCOMING OUTSIDE CLASSES!

Check guild website: deercreekbasketryguild.org for more information!

- July 26, 2025 - Susan Schaefer teaching a beginner Rib Class. Class is full!
- August 2, 2025 - Jim Anspach, weaving on a gourd.
- October 16-18, 2025, Kathy Petronzio, teaching three of her most popular designs! Announcement emailed to members July 5th.
- November 13-15, 2025, Dave and Candy Barnes with some new Nantucket designs. Info coming soon.

Email dcbg@zoominternet.net and let June know which classes you'd like to take after they've been announced and she will email you a registration form!

Anne is from the Eastern Panhandle of West Virginia where she works in her studio designing and teaching baskets. She was a production basket maker for many years, and she brings those skills into each basket that she teaches. Ribbed basketry is her specialty, and some of her baskets have taken on a sculptural perspective in recent years.

In 2023 she attended the World Wicker and Weaving Festival in Poznan, Poland. She taught at the 2023 National Basketry Organization Conference in Takoma, WA. She has taught on four basketry cruises, teaches basketry widely and lectures about the woven form. She is in her 43rd year of weaving which still fascinates her.

She is thrilled that her first book, “Ribbed Basketry: Traditional to Contemporary”, is finally in print. This coming fall will mark her 35th year of participation in the annual Over the Mountain Studio Tour. (website: www.overthemountainstudiotour.com.) Her goal is to make each student’s class a successful one. In addition, Anne is making plans to go back to Poland in 2026 with a group of basket enthusiasts from the USA. (Do you want to go? Let Anne know!)

2025 saw her slowing down her teaching schedule for a shoulder replacement, BUT - she is back!! Yeah! She is attending the NBO Conference in Tacoma, WA in July of 2025. The next conference in 2027 will be on the East Coast, so be thinking about attending!

Anne is not only a “Featured Teacher” in this edition of The Lash Word, but a “Favorite Teacher” to visit Deer Creek Basketry Guild to teach her wonderful baskets!



Out and About!

Our very own DCBG member Cathy Billings partners with White Owl Workshop, a cute little make-your-own crafts shop in Fawn Grove, PA, offering basketry classes to both new and seasoned weavers. Recent offerings have included an American Flag basket, a wheeled cart basket, a handled market basket, a spring basket and an Easter bunny basket! One can find additional information on both Facebook and Eventbrite (search White Owl Workshop). Note: White Owl Workshop also offers other fun crafts to include felting, glassblowing, stained glass, paper flower crafting, and more! Cathy Billings attends most of our membership meetings so be sure to chat with her about upcoming basket classes.

Guild Officers and Chairpersons - 2024 - 2026

*President: Mary Louise Orth, Ph: 443-900-1202; Email: dcbg@deercreekbasketryguild.org or orth1949@gmail.com

*Vice President: Mary Anne Tremblay, Ph: 443-243-4612; Email: wyoled08@yahoo.com

*Secretary: Lisa Owens, Ph: 443-310-8329; Email: lisakowens@yahoo.com

*Treasurer: Kathy Garrett, Ph: 443-655-2949; Email: ktbgarrett@verizon.net

*Program Chairperson: Louise Beyer, Ph: 410-937-3983; Email: louisebeyer@comcast.net (Steppingstone & Guilders Weave POC)

*Education Coordinator: Kathi Workman, Ph: 410-790-4279; Email: songbirde2@gmail.com

*Membership Chairperson: June Hersey, Ph: 717-309-9958; Email: jhersey@zoominternet.net (Marketing, Website Manager)

Librarians: Heidi Oestreich, Ph: 240-404-8962; Email: heidioestreich@yahoo.com

Pat Anderson, Ph: 443-528-7331; Email: flash481@comcast.net

Historian: Vacant

* Board Member

DCBG's Member's Summer Picnic & Yard Sale!

We will gather at the Spenceola Clubhouse, 1999 Mardic Drive, Forest Hill, MD on Sunday, July 13th at 1:00 pm for our annual summer get-together, which will take the place of our regularly scheduled July membership meeting.

Members will enjoy a guild-sponsored, catered lunch from Mission BBQ, and have the opportunity to participate in our basket-themed yard sale. Basket-themed items you'd like to sell or donate may include completed baskets, reed, kits, accessories, embellishments, tools, patterns, books, or anything else you think our members might be interested in. Please bring a folding table to display your wares.

For more information, please contact Lisa Owens, Secretary, 443-310-8329.

Membership

July 1st marks the beginning of a new year at Deer Creek!

Have you renewed yet? Visit the Guild website to download an application and follow the form instructions. Dues increase to \$20 for renewals submitted after August 31st, so don't delay. A fun, productive year is ahead!

Basket Bucks & How to Use Them

DCBG members have the opportunity to earn "Basket Bucks" by supporting our Bingo Fundraisers. This is a great way to earn credit that can be used to advance your basketry skills or purchase reed, kits and tools from Bey-Her Baskets. Bucks are earned in a variety of ways to include:

- * weave a basket and donate it as a Bingo prize
- * fill a prize basket
- * be a greeter on Bingo day
- * donate a baked good for the Bake Sale table
- * weave basket door prizes
- * volunteer to help out at the Bingo with set-up/clean-up
- * volunteer for any of the many other activities that make our fundraiser a success

Basket Bucks are good for eighteen months and a reminder is emailed to let you know when they will expire so you don't lose them. There are several basket classes coming up that you can use your bucks to offset class fees. (See Classes listed elsewhere in this newsletter.)

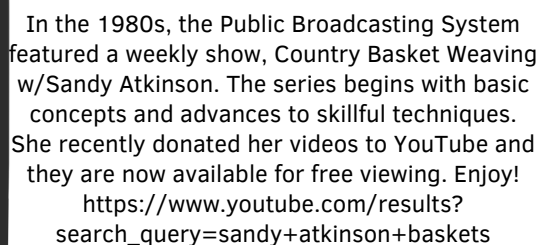
So whether you want to learn a new basketry skill or just make a beautiful new basket, spending those bucks towards a class or on kits from Bey-Her is a great way to get started.

Any questions...contact Kathy Garrett, Guild Treasurer

Dye Party Suggestions

The Guild dye party is scheduled for November 2nd at Steppingstone Farm Museum. November is far away, but now is the time to start preparing! Here are some suggestions:

Go through your patterns and determine which baskets you want to make in the upcoming months that require color. Get a ziplock bag, put in the materials you need to dye for that pattern. If stakes are dyed, go ahead and cut the stakes. If more than one color is required, separate materials by color, identify; make a list on the bag. Include the pattern in the bag or if not your pattern, make a note of the name and where you can get it (i.e., Guild library), friend. After dyeing, rinsing and drying, put the reed back in the bag and when you are ready to weave that basket, much of the work is already done. Never seal damp or wet reed in a plastic bag – will mildew quickly!! If you follow this, during the dye party you can quickly dye the material you need to complete a pattern. It's a good idea to dye a little more material than you think you'll need. Have some old reed...?? – dyeing will usually spruce it up; or have some that's faded, or not a color you like...over dye it; never know what color you might get, or there's always black Dye seagrass, ash strips, or other basket weaving material to add that special something to your basket!!



In the 1980s, the Public Broadcasting System featured a weekly show, Country Basket Weaving w/Sandy Atkinson. The series begins with basic concepts and advances to skillful techniques. She recently donated her videos to YouTube and they are now available for free viewing. Enjoy!
https://www.youtube.com/results?search_query=sandy+atkinson+baskets

Next Newsletter

Contribute ideas, articles, resources, pictures, etc. to the next edition of "The Lash Word"! Write it up and email to Mary Anne Trembly at wyoed08@yahoo.com.

Next publication date: Fourth Week of September 2025! Submissions due September 15, 2025.

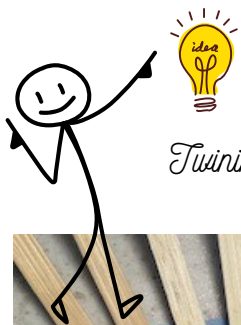
Bingo Update

Our April Bingo was a big success. We had 248 attendees.

Big thanks to the WELCA Ladies of St. Paul's Church for some delicious food. All proceeds support the WELCA Ladies charitable efforts.

Our attendees were extremely generous in our support of the St. Paul's Church Food pantry, filling two vehicles with nonperishable donations in addition to monetary donations. Our three raffle prizes brought in over \$800 supporting the following three charities: Cecil Community College Nursing Program, Steppingstone Farm Museum Barn Fire Rebuild, and the DCBG Nantucket Group.

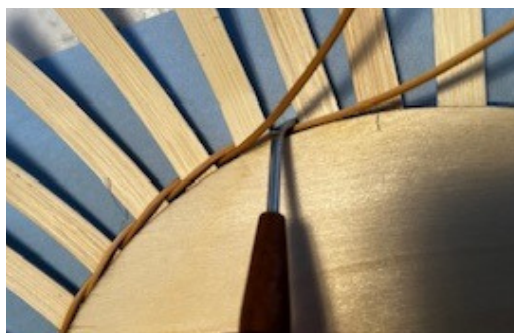
Put it on your Calendar!!! Our next Bingo will be Saturday, December 13, 2025 at the Level Fire Hall, 3633 Level Village Road, Havre de Grace, MD 21078. Tickets will go on sale in August. Contact Kathi Workman at 410-790-4279 to get yours.



Twining Around a Wooden Base



1. Evenly space stakes around the base, smooth side up. Insert twining material behind 2 consecutive stakes with an 1-1/2" tail extending behind or under the stakes.



2. Take the left-most twiner and weave it under the next stake. Work around the base in this manner.
3. Use a packing tool to hold the twining material snug against the base.

December 2025 Bingo Door Prize

One thing that makes our bingos unique, is every patron receives a door prize basket! Members generously give up their time to weave this basket. The result, happy patrons and members can earn Basket Bucks for each basket they weave.

For the December 2025 bingo, the Board has chosen a basket woven on a Qui Yogurt jar! A slotted, wooden bottom will be glued to each jar and members will weave a continuous weave to the top of the basket. A piece of tiny seagrass will be glued around the top for a rim (NO rimming!). A sample is shown here.

The Guild will provide all the materials, BUT, we need 250 Qui jars! Yes, it sounds like a lot but really if everyone canvasses their family and friends, we should be able to accumulate that many. The jar labels come off pretty easily which is a big help! So please start collecting jars today and bring to the July and August meetings, arrange to have someone bring them for you or make other arrangements.



Base

4. When your twining lays on top of your starting stake, take that piece of twining and lay it over the first stake and under the next stake (the end will then be to the inside of the basket base). Take the other piece of twining and lay it over than under the next stake, ending to the inside of the basket base. Trim ends to 1" to 1.5" when dry.

Guilders Weave Update

In January 2026, the Tidewater Basketry Guild will host their annual basketry convention entitled Guilders Weave, in Newport News, VA. Basket enthusiasts gather to weave with some of the best teachers around, and to mingle with friends throughout this extended weekend event.

A few weeks ago, past Guilders Weave participants received an email outlining a new requirement for registration. Previously, Deer Creek enjoyed the ability to opt-in for early registration without having to be direct dues-paying members of Tidewater. Moving forward, early registrants must be formal Tidewater Basketry Guild members. Annual membership to Tidewater is \$25.00 and runs from October to October. To meet the deadline for the early Guilders Weave 2026 registration, one must become a Tidewater member prior to submitting early registration (which opens later this summer). Non-members may still register but will not be considered for early registration, which may reduce the chance of being selected for preferred basket classes.

The Tidewater website offers information on membership and will update details for Guilders Weave 2026 as they become available. www.tidewaterbasketryguild.org.

State & County Fairs

Summer time is fair time!

What a great feeling to bring home some ribbons!

The 144th Maryland State Fair will open on August 21st and run through September 7th. Registration is now open and will close on July 31st. All entries must be delivered to the fairgrounds on August 17th or 18th and picked up on September 8th. Please check their website at <https://marylandstatefair.com> for further information and instructions. The fairgrounds are located at 2200 York Road, Lutherville-Timonium, MD 21093.

The 2025 Harford County Farm Fair will be held July 19th through July 26th at the Equestrian Center, 608 N. Tollgate Rd, Bel Air. To register, go to <http://harfordfarmfair.fairentry.com> and click on the "Community Entries Catalog". From that page you can register and see all the categories. Registration is scheduled to close on July 15th. All entries must be delivered to the Crouse Building at the fairgrounds on July 18th and picked up on July 27th.

Remember to peruse all categories and divisions to see which ones you might have an entry for. Don't forget our special category, the Francis Scott Key Bridge. We will be offering assistance in delivering your baskets to the fair to those of you who might need help with transporting them. Stay tuned for further details. *[Let's get weaving!](#)*

DCBG Website

Be sure to check our website, deercreekbasketryguild.org for latest information!

Suggestions to improve the website or to contribute resources, articles, pictures of Guild event..., email: dcbg@zoominternet.net

Reed It & Weave

Have you visited the Guild Library recently!! If you haven't you are missing out on a great resource!

Also, as you prepare for the July Basketry Yard Sale, do you have duplicate patterns, patterns you won't be using, or basketry books, either patterns or information, that other members would enjoy...plan to donate them to the Guild Library!!

Calendar

Meetings are usually held the first Sunday of the month at 1 pm, unless it conflicts with a federal holiday, then the second Sunday at the Harford Community College (HCC), Joppa Hall, Room J 015. Check our website for a map to the hall.

July 13, 2025 - Monthly Meeting, Spenceola Clubhouse; Picnic and Yard Sale

August 3, 2025 - Monthly Meeting, Steppingstone Farm Museum; Activity: Weaving on a Gourd with Regina Cole and Mary Anne Tremblay

September 7, 2025 - Monthly Meeting, HCC; Activity: Small market basket w/embellishment.

October 5, 2025 - Monthly Meeting, HCC; Activity: Christmas Ornament w/Regina Cole

November 2, 2025 - Monthly Meeting, Steppingstone Farm Museum (Dye Party)

December 7, 2025 - Monthly Meeting, Spenceola Clubhouse, Christmas Party

December 13, 2025 - BiAnnual Bingo, Level Fire Hall

--Dates and location subject to change! Check your email, website and/or contact our President for updates--

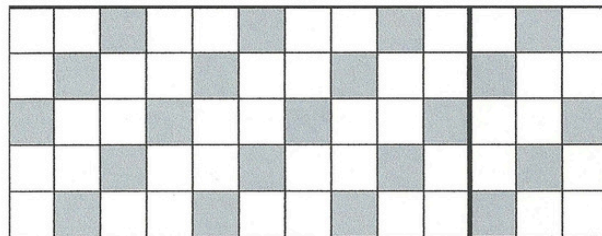


Blue Diamond Wall Basket

Supplies Needed:

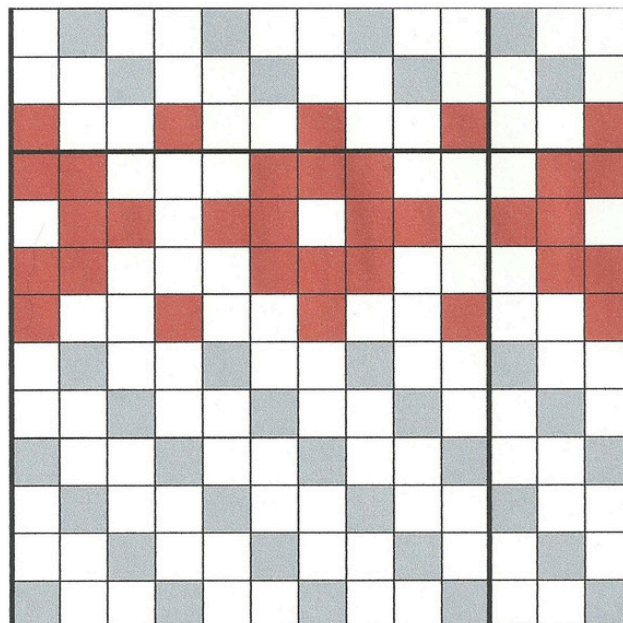
- 1/2" Flat Reed
- 1/2" Flat Dyed Turquoise (or any color)
- 1/2" Flat Oval Reed
- #3 Seagrass
- 3/16" Flat Oval Reed
- 2" Hand-carved notched Side Handle

1. Out of 1/2" flat natural, cut 5 stakes 25" and 13 stakes 20" long and mark the midpoints. Weave your base following the diagram below, rough sides up, using an under 2, over 1 pattern. There will be a space of about 1/16" between each stake and the base should measure around 3" x 7" when finished (a bit bigger is okay).



gray shows the overs

2. Upset the stakes. Start weaving with 1/2" flat natural. The weaving pattern for all the natural rows is: over 1, under 2. The 1st row starts on the outside of the far left stake just like in the diagram below. Overlap each row hiding your ends and start the next row in front of a stake. Smooth side of stakes should be facing you. Weave the side of the basket as the diagram below shows. The basket should get a little larger as you go, so that a piece of 3/16" flat oval will easily go between each stake when you do the border.



- over 1, under 2
- over 3, under 3
- over 2, under 1
- over 3, under 3
- over 1, under 2

Gray shows the overs when using natural reed and the red shows the overs when using dyed reed.

3. Tuck all the stakes on the outside of the top row of weaving. Cut the stakes on the inside of the top row of weaving off so that their ends do not stick up over that top row of weaving.

4. Decide which side you like the best and make that the front of the basket. On the back of the basket find the center stake. Take your 2" side handle and insert it into the basket on top of the stakes on each side of the center stake. The handle should go under a couple of rows of weaving only where the handle is thin. See the picture to the right.



5. Place a piece of 1/2" flat oval on the inside and the outside of the top row of weaving, overlapping the ends an inch or two. Be sure to place the ends you see where the piece of 3/16" flat oval you're lashing with will cover them. Use clothespins to hold in place. Place a piece of #3 Seagrass on top of the last row of weaving, between the two pieces of 1/2" flat oval. I started mine against the handle and ran it around the top til I got to the handle again and cut another short piece for that space inside the handle. Lash with a piece of 3/16" flat oval going between each stake. You could go around a second time and make an "X"ed border if you like.

pattern curtesy of: August Moon Basketry, 4702 Airport Road, Pageland, SC 29728
phone: 843-672-3534 visit website at: www.augustmoonbasketry.com

Outside Classes Roundup

Spring 2025 has been a busy quarter for our Deer Creek members. The Education Committee, headed by Kathi Workman, has offered members several classes and you all responded with basically filling the classes (which supports our "outside travelling" teachers); contributing generously in the daily lunches, and being great guild representatives to our teachers at the classes!

Just to summarize: In March, Pam Wilson taught six different baskets over three days. A total of 27 members took advantage of these classes. In April, Pam Milat, of North Carolina, taught for three days and a total of 26 students created beautiful works of art. In May, we were treated to two different teachers, KnK Creations (Kim and Karen Maugans) of Virginia taught a one-day class, 10 members made a unique Tool Caddy! Later in May, 30 members made beautiful Nantucket Baskets over three days with Denise Bendelewski of Magnolia Baskets, Delaware. In June, members were treated to teacher, Cheryl Thomas for three days who taught 46 students! Bring your baskets to a Guild Meeting Show and Tells!!

And there's lots scheduled: July: Susan Schaefer, teaching a beginner rib basket (class is full, but you can get on the wait list); August 2: Jim Anspach, weaving on a gourd (check for open spaces); October 16-18: Kathy Petronzio teaching some of her most popular designs; November 13-15: David and Candy Barnes with some new Nantucket designs – save those dates!

Any teacher/class recommendations? Contact Kathi Workman at songbirde2@gmail.com; registration information...contact June Hersey at dcbg@zoominternet.net. Basket Bucks can be used for any of these classes to offset registration fees! How many basket bucks do you have...contact Kathy Garrett at ktbgarrett@verizon.net to find out!

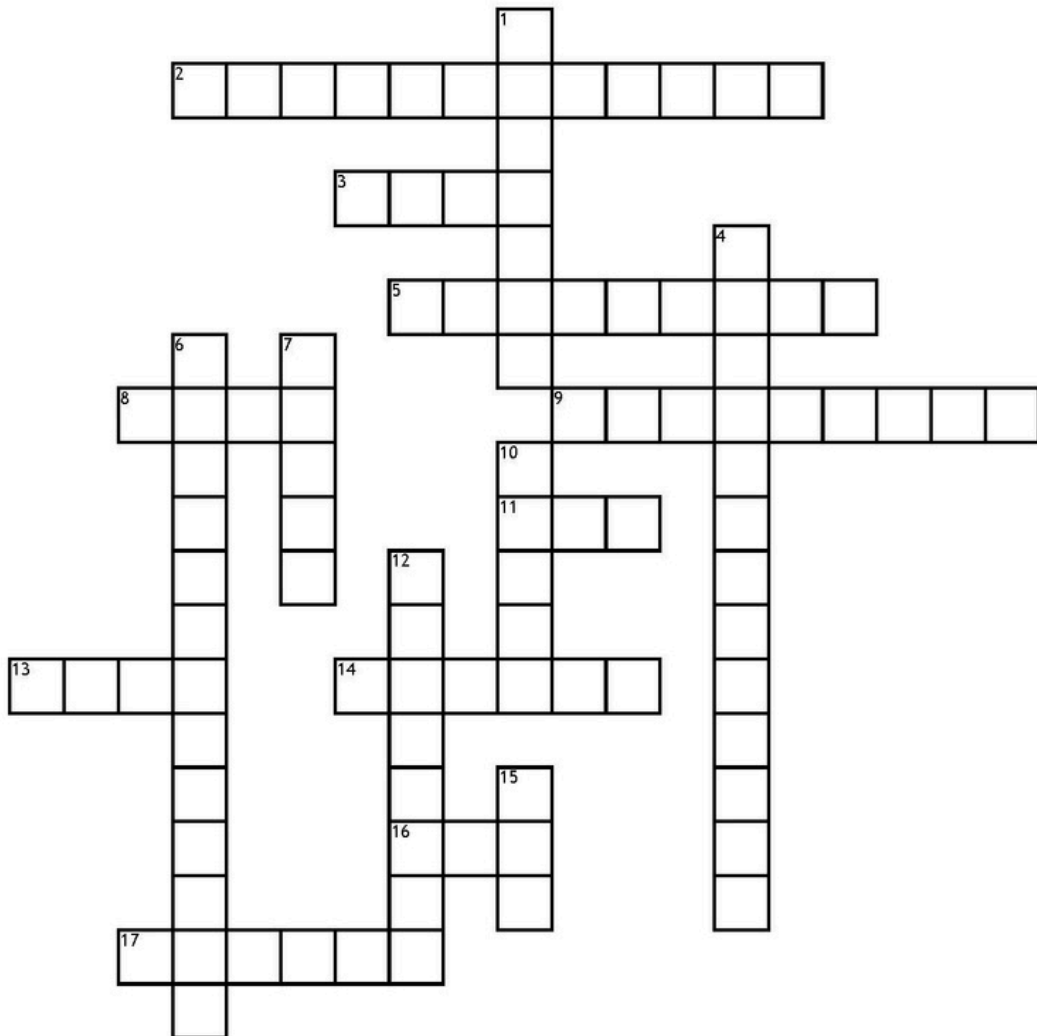
Name: _____

Date: _____

Word Search

Rit	M	O	N	O	C	H	R	O	M	A	T	I	C	Z	K	U	R
beet	T	E	M	B	G	D	K	O	G	X	P	M	D	V	M	F	W
Walnut	R	Y	I	Y	C	X	A	Y	W	B	K	B	E	S	J	I	M
Black	C	D	E	S	R	O	K	F	P	C	V	Y	H	N	R	R	I
space-dye	E	F	H	E	J	A	O	I	J	Y	D	P	Z	F	A	N	E
Dye	D	Z	G	M	B	P	T	L	S	E	D	R	G	W	T	S	K
Red	W	P	V	D	N	E	T	N	C	I	E	H	X	E	B	E	V
Orange	B	Y	K	O	E	Q	E	A	E	D	V	N	R	X	T	C	R
Cool	O	T	U	B	E	H	P	T	E	M	E	M	D	U	A	O	U
Warm	W	H	B	O	R	S	J	G	U	U	E	M	N	N	B	N	N
Green	Z	M	C	R	G	X	N	V	T	D	V	L	P	B	R	D	C
Complementary	O	Y	C	G	C	A	Y	R	I	Q	A	C	P	M	Y	A	E
Analogous	M	I	Y	B	R	M	A	A	V	W	W	N	N	M	B	R	B
Neutral	E	I	C	O	D	L	T	K	S	X	N	I	N	X	O	Y	L
Intermediate	I	C	W	Z	Z	E	W	C	J	H	Z	G	L	S	T	C	A
Secondary	I	V	X	C	S	U	O	G	O	L	A	N	A	A	I	C	C
	F	W	D	J	D	M	X	G	J	C	Z	Y	K	M	R	Q	K

Color Wheel



Across

- 2. Red-Orange is what kind of color
- 3. A vegetable that can be used to dye reed
- 5. Family of colors
- 8. Violet is what kind of color
- 9. What Primary colors make
- 11. A popular commercial dye

- 13. Red is a what kind of color
- 14. A nut that can be used to create basket dye
- 16. Use this process to change reed from natural to a color.
- 17. A Secondary Color

Down

- 1. Opposite colors mix
- 4. One Color
- 6. Opposite Colors

- 7. This is a neutral color
- 10. Blue and Yellow make this color
- 12. How to add more than one color to a weaver.
- 15. This is a Primary Color